

# Photograph

Archive / Collection of Photographs

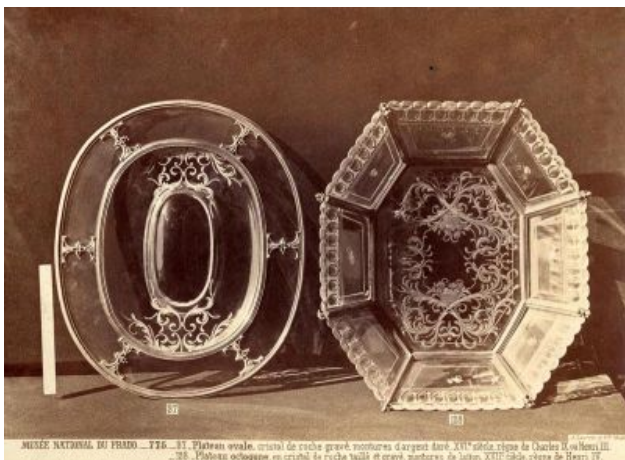
**Accession Nr.:** FLT 1948 

**Date of production:** late 19th - early 20th century

**Materials:** paper

**Techniques:** black and white photo; mounted on cardboard

**Dimensions:**  
 full size: 34,5 x 31 cm  
 height: 24,4 cm  
 width: 33,5 cm



MUSEE NATIONAL DU PRADO - 776 - 37. Plateau ovale, cristal de roche gravé, montures d'argent doré. XVI<sup>e</sup> siècle, règne de Charles IX ou Henri III.  
 - 778 - Plateau octogone, en cristal de roche taillé et gravé, montures de laiton. XVII<sup>e</sup> siècle, règne de Henri IV.